

**FEATURES**

- Analog signal conversion to SPDT contact
- 15A/ 120VAC rated contacts
- LED relay position indication
- 24VAC/ DC operation
- Small size 1.1” by 2.19”

**APPLICATIONS**

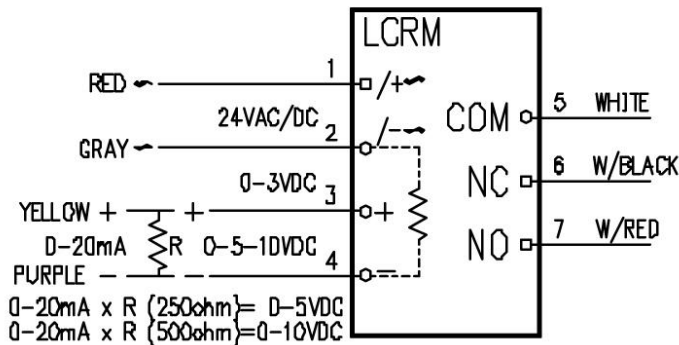
- Analog conversion to on/ off control
- Analog lighting control
- Remote fan start/ stop control

**DESCRIPTION & OPERATION**

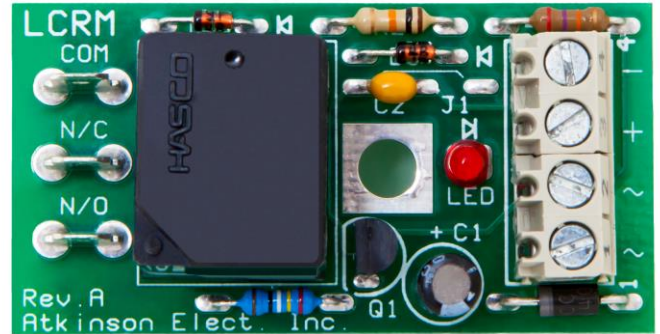
The LCRM is a low current voltage relay module. It is powered by 24VAC or DC and accepts a switched analog voltage signal either a 0/3VDC, 0/5VDC, 0/10VDC signal or a switched 4/20mA signal which will produce a 1/5VDC (250 Ohm load resistor) or 2-10VDC (500 Ohm load resistor). The LCRM has a form C relay output rated at 15A@120VAC. The LRCM has an LED to indicate when the relay is energized.

The input signal drives a transistor switch that energizes and de-energizes the relay. The relay will energize with a switched input voltage of 2.5 to 3.0VDC when signal common is connected the terminal 2 and de-energize when the input is less than 0.5VDC. When signal common is connected to terminal 4, the relay will energize with a 4 to 10VDC signal and de-energize when the input signal is less than 3VDC. The controller’s analog output should be setup for on/off operation.

**WIRING CONFIGURATION**



LCRM/P USE THE WIRE COLORS



**SPECIFICATIONS**

SIZE:	1.10”L x 2.19”W x 0.95”H
MOUNTING:	LCRM-ST 2.187” RDI SnapTrack (supplied) LCRM-P 2” Lx1”W double sided foam tape and 1.25” self-tapping Philips screw
POWER:	24VAC .75VA 50/60Hz/ or 24VDC @ 30mA
INPUT SIGNAL:	0/3VDC (signal common terminal 2) 0/5, 0/10VDC (signal common terminal 4) 1/5VDC (4/20mA with 250 Ohm resistor) 2/10VDC (4/20mA with 500 Ohm resistor)
INPUT IMPEDANCE:	≥ 100KΩ
ACTION:	Make on voltage/ current rise Brake on voltage/ current drop
AMBIENT TEMPERATURE:	0-50°C
RELAY:	Form C with contact rated for: 15A @ 120VAC, 15A @ 28VDC, 10A @ 277VAC
CONNECTIONS:	
LCRM-ST	Wieland terminal series 8192 Screw-cage clamp terminals UL rated 14-30 AWG wire @ 20A
LCRM-P	12” 18 AWG UL# 1015 listed wire Quantity 7 wire nuts.

ORDERING INFORMATION

LCRM/XX

└ Mounting Option Code

MOUNTING OPTION CODES

- ST SnapTrack mounting with cage screw terminals
- P Epoxy potted, screw or double stick tape mounting with wire nut termination

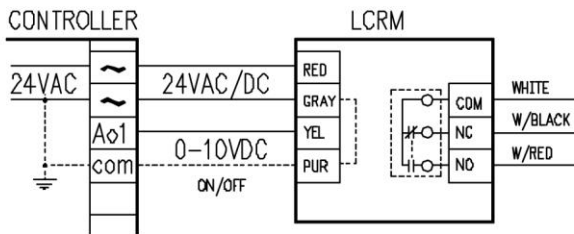
RELAY OUTPUT SPECIFICATIONS

- Relay type: Hasco # KLT1C15DC12
- Contact configuration: 1 Form C
- Contact rating: 15 Amp @ 28VDC, resistive  
15 Amp @ 120VAC  
15 Amp @ 240VAC  
10 Amp @ 277VAC
- Contact material: Silver alloy
- Minimum electrical life: >100K operations (15A, 120VAC)
- Minimum mechanical life: >10 million operations

TERMINAL BLOCK SPECIFICATIONS

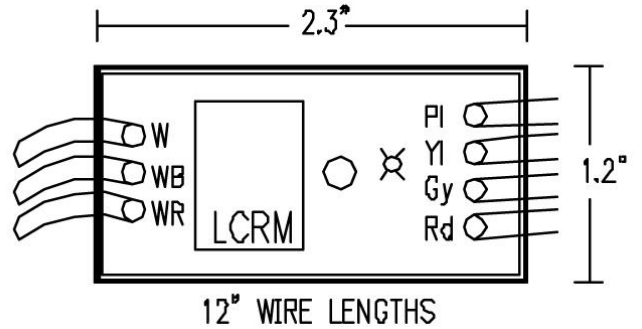
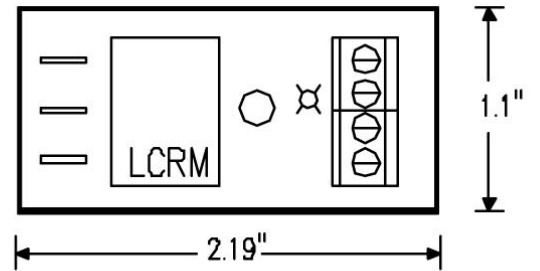
- Terminal type: Wieland # 25.191.0453.0
- Connection type: Screw cage clamp
- Connection rating: UL: 15 Amp 14-20 AWG 300VAC  
CSA: 20 Amp 14-22 AWG 300VAC

TYPICAL APPLICATIONS

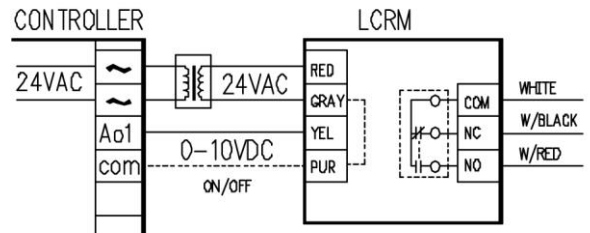


The LCRM and controller use a half-wave rectifier in their power supply section. Terminal 4 (purple wire) is common to terminal 2 of the 24VAC input. The LCRM accepts a 0 to 10VDC signal that is set for on/ off operation. The relay's trip threshold voltage is around 3.5VDC on the input.

PHYSICAL CONFIGURATION



TYPICAL APPLICATIONS



The LCRM uses a half-wave rectifier and is isolated from the controller that uses a full-wave bridge rectifier with an isolation transformer. The LCRM accepts a 0 to 10VDC signal that is set for on/ off operation.